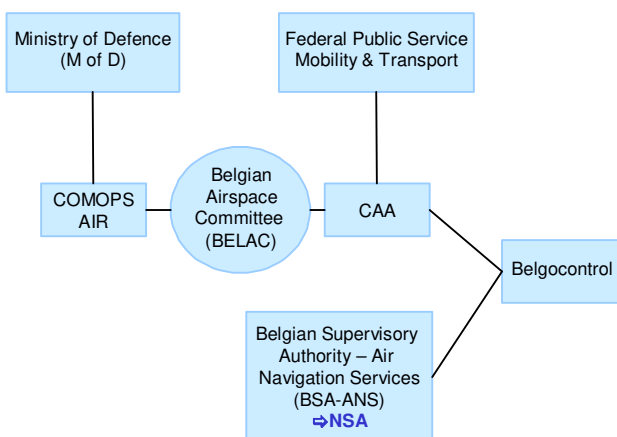


Institutional arrangements and links (2017)



Status (2017)

- Public Autonomous Enterprise as of 1998 under a management contract
- 100% State-owned

National Supervisory Authority (NSA):

Belgian Supervisory Authority - Air Navigation Services (BSA-ANS)

Body responsible for:

Safety Regulation

Civil Aviation Authority

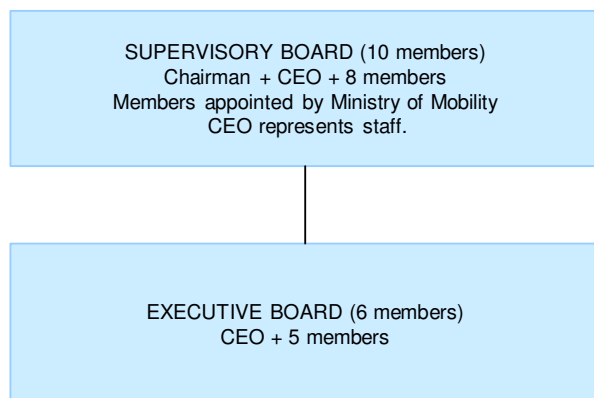
Airspace Regulation

Belgian Airspace Committee

Economic Regulation

Federal Public Service of Mobility and Transport

Corporate governance structure (2017)



Belgocontrol (2017)

CHAIRMAN OF THE SUPERVISORY BOARD:

Renaud Lorand

DIRECTOR GENERAL (CEO):

Johan Decuyper

Scope of services (2015)

<input checked="" type="checkbox"/> GAT	<input type="checkbox"/> Upper Airspace	<input type="checkbox"/> Oceanic ANS
<input type="checkbox"/> OAT	<input checked="" type="checkbox"/> Lower Airspace	<input checked="" type="checkbox"/> MET

- Belgocontrol controls lower airspace up to FL 245, including Luxembourg airspace above FL 145/165
- Upper airspace (> FL 245) is controlled by Maastricht UAC

Operational ATS units (2015)

- 1 ACC (Brussels)
- 4 APPs (Brussels, Liege, Charleroi, Oostende)
- 5 TWRs (Brussels, Antwerp, Liege, Charleroi, Oostende)

Key financial and operational figures (ACE 2015)

Gate-to-gate total revenues (M€)	230
Gate-to-gate total costs (M€)	201
Gate-to-gate ATM/CNS provision costs (M€)	142
Gate-to-gate total ATM/CNS assets(M€)	99
Gate-to-gate ANS total capex (M€)	6
ATCOs in OPS	225
Gate-to-gate total staff (incl. MET staff*)	753
Total IFR flight-hours controlled by ANSP ('000)	113
IFR airport movements controlled by ANSP ('000)	380
En-route sectors	7
Minutes of ATFM delays ('000)	234

* if applicable

Size (2015)

Size of controlled airspace: 39 500 km²

