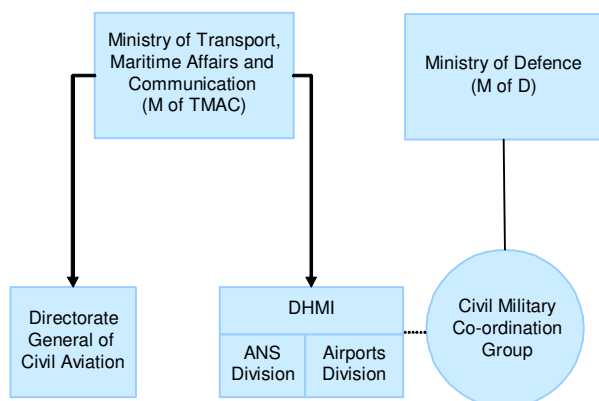




### Institutional arrangements and links (2017)



### Status (2017)

- Autonomous State Enterprise
- 100% State-owned

#### National Supervisory Authority (NSA):

Not applicable since Turkey is not bound by SES Regulations

#### Body responsible for:

##### Safety Regulation

Directorate General of Civil Aviation

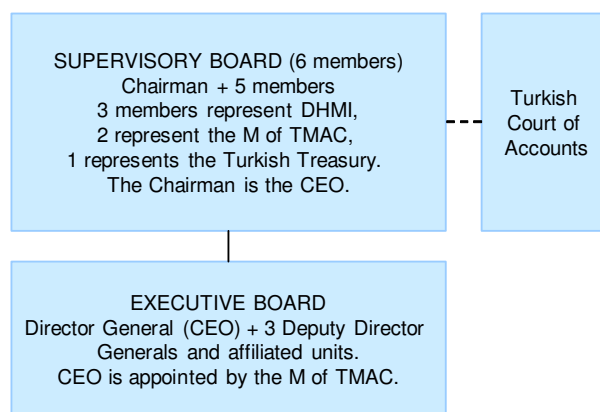
##### Airspace Regulation

General Directorate of DHMI

##### Economic Regulation

General Directorate of DHMI

### Corporate governance structure (2017)



### DHMI (2017)

#### CHAIRMAN OF THE SUPERVISORY BOARD:

Mrs. Funda Ocak

#### DIRECTOR GENERAL (CEO):

Mrs. Funda Ocak

#### DIRECTOR ANS DIVISION:

Mr. Mustafa Kiliç

### Scope of services (2015)

<input checked="" type="checkbox"/> GAT	<input checked="" type="checkbox"/> Upper Airspace	<input type="checkbox"/> Oceanic ANS
<input type="checkbox"/> OAT	<input checked="" type="checkbox"/> Lower Airspace	<input type="checkbox"/> MET

- DHMI is responsible for the administration of 49 State Airports. ATS services are provided by DHMI in 52 Airports

### Operational ATS units (2015)

1 ACC (Ankara) (en-route sectors from Istanbul and Izmir ACCs have been transferred to Ankara ACC as of 18 November 2015)  
37 APPs  
46 TWRs  
1 FICs/ 2 RCCs  
48 AIS/ARO  
47 SAR sub-center units

### Key financial and operational figures (ACE 2015)

Gate-to-gate total revenues (M€)	541
Gate-to-gate total costs (M€)	481
Gate-to-gate ATM/CNS provision costs (M€)	430
Gate-to-gate total ATM/CNS assets(M€)	836
Gate-to-gate ANS total capex (M€)	166
ATCOs in OPS	1 219
Gate-to-gate total staff (incl. MET staff*)	6 147
Total IFR flight-hours controlled by ANSP ('000)	1 268
IFR airport movements controlled by ANSP ('000)	1 262
En-route sectors	22
Minutes of ATFM delays ('000)	2 611

\* if applicable

### Size (2015)

Size of controlled airspace: 982 000 km<sup>2</sup>

