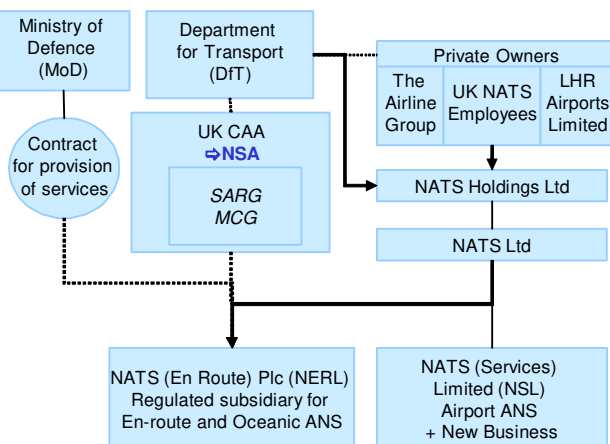


Institutional arrangements and links (2017)



Status (2017)

- Public Private Partnership as of 2001
- 49% State-owned (Govt retains a Golden Share)
- 51% private-owned (42% by the Airline Group, 4% by LHR Airports Limited and 5% by UK NATS employees)
- The Airline Group comprises 6 airlines (BA, Virgin Atlantic, Lufthansa, EasyJet, Thomas Cook, Thomson Airways) and 2 pension funds (Pension Protection Fund and USS Sherwood Limited, which owns 49.9% of the Airline Group).

National Supervisory Authority (NSA):

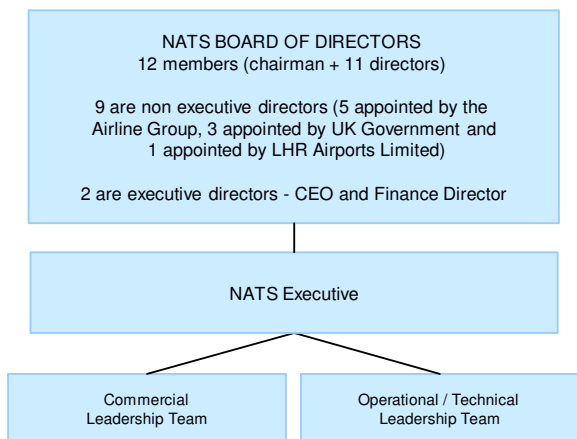
UK CAA

Body responsible for:

- Safety Regulation
UK CAA, Safety and Airspace Regulation Group (SARG)
- Airspace Regulation
UK CAA, Safety and Airspace Regulation Group (SARG)
- Economic Regulation
UK CAA, Markets and Consumers Group (MCG).

Charges control in RP2 linked to CPI (formerly RPI in CP3/RP1)

Corporate governance structure (2017)



NATS (2017)

CHAIRMAN OF THE NATS BOARD:

Paul Golby

CEO of NATS:

Martin Rolfe

OPERATIONS DIRECTOR:

Juliet Kennedy

COMMERCIAL DIRECTOR:

Guy Adams

Scope of services (2015)

<input checked="" type="checkbox"/> GAT	<input checked="" type="checkbox"/> Upper Airspace	<input checked="" type="checkbox"/> Oceanic ANS
<input type="checkbox"/> OAT	<input checked="" type="checkbox"/> Lower Airspace	<input type="checkbox"/> MET

Operational ATS units (2015)

- 1 OAC (Shanwick)
- 3 ACCs (Swanwick AC, London TC, Prestwick AC)
- 16 APPs
- 16 TWRs (including Gibraltar TWR)
- 2 AFISs

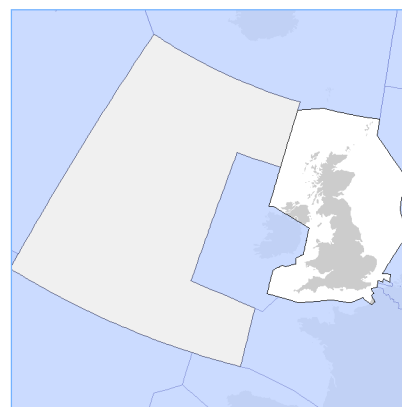
Key financial and operational figures (ACE 2015)

Gate-to-gate total revenues (M€)	1 040
Gate-to-gate total costs (M€)	917
Gate-to-gate ATM/CNS provision costs (M€)	905
Gate-to-gate total ATM/CNS assets(M€)	1 163
Gate-to-gate ANS total capex (M€)	171
ATCOs in OPS	1 357
Gate-to-gate total staff (incl. MET staff*)	4 027
Total IFR flight-hours controlled by ANSP ('000)	1 347
IFR airport movements controlled by ANSP ('000)	1 753
En-route sectors	68
Minutes of ATFM delays ('000)	946

* if applicable

Size (2015)

Size of controlled airspace: 3 000 000 km²



Continental: 880 000 km² - Oceanic: 2 120 000 km²