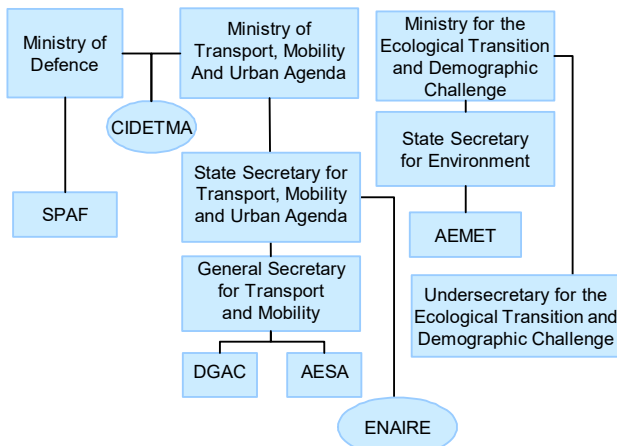


Institutional arrangements and links (2022)



Status (2022)

- Business Public Entity attached to Ministry of Transport, Mobility and Urban Agenda
- A company with specific status (governed by Private Law, except when acting in its administrative capacity)
- 100% State-owned

National Supervisory Authority (NSA):

- AESA (Spanish Aviation Safety and Security Agency) (for ENAIRE)
- Spanish Air Force Staff (for MIL)
- Undersecretary for the Ecological Transition and Demographic Challenge (for MET)

Body responsible for:

Safety Regulation

Spanish Civil Aviation Authority - Government
AESA - Government

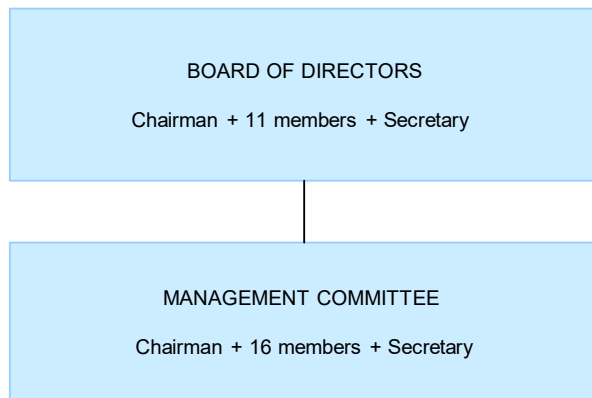
Airspace Regulation

Spanish Civil Aviation Authority - Government
AESA - Government

Economic Regulation

Government

Corporate governance structure (2022)



ENAIRE (2022)

CHAIRPERSON OF THE BOARD OF DIRECTORS:
Isabel Pardo de Vera

DIRECTOR GENERAL OF ENAIRE:
Ángel Luis Arias Serrano

DIRECTOR OF AIR NAVIGATION SERVICES:
Enrique Maurer Somolinos

Scope of services (2020)

<input checked="" type="checkbox"/> GAT	<input checked="" type="checkbox"/> Upper Airspace	<input type="checkbox"/> Oceanic ANS
<input type="checkbox"/> OAT	<input checked="" type="checkbox"/> Lower Airspace	<input type="checkbox"/> MET

Operational ATS units (2020)

5 ACCs (Madrid, Barcelona, Canarias, Palma, Sevilla)
17 APPs (3 stand-alone APPs + 14 APPs co-located with TWR units)
21 TWRs

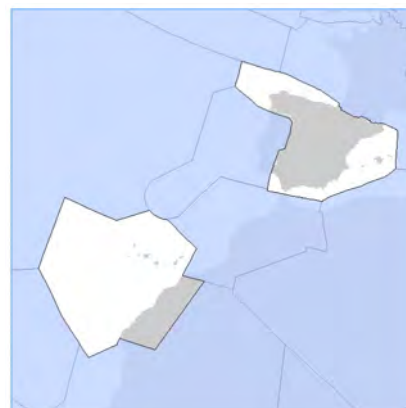
Key financial and operational figures (ACE 2020)

Gate-to-gate total revenues (M€)	377
Gate-to-gate total costs (M€)	785
Gate-to-gate ATM/CNS provision costs (M€)	736
Gate-to-gate total ATM/CNS assets(M€)	578
Gate-to-gate ANS total capex (M€)	99
ATCOs in OPS (FTEs)	1 675
Gate-to-gate total staff (incl. MET staff*)	3 936
Total IFR flight-hours controlled by ANSP ('000)	664
IFR airport movements controlled by ANSP ('000)	644
En-route sectors open at maximum configuration	60
Minutes of ATFM delays (post-OPS adjusted, '000)	454

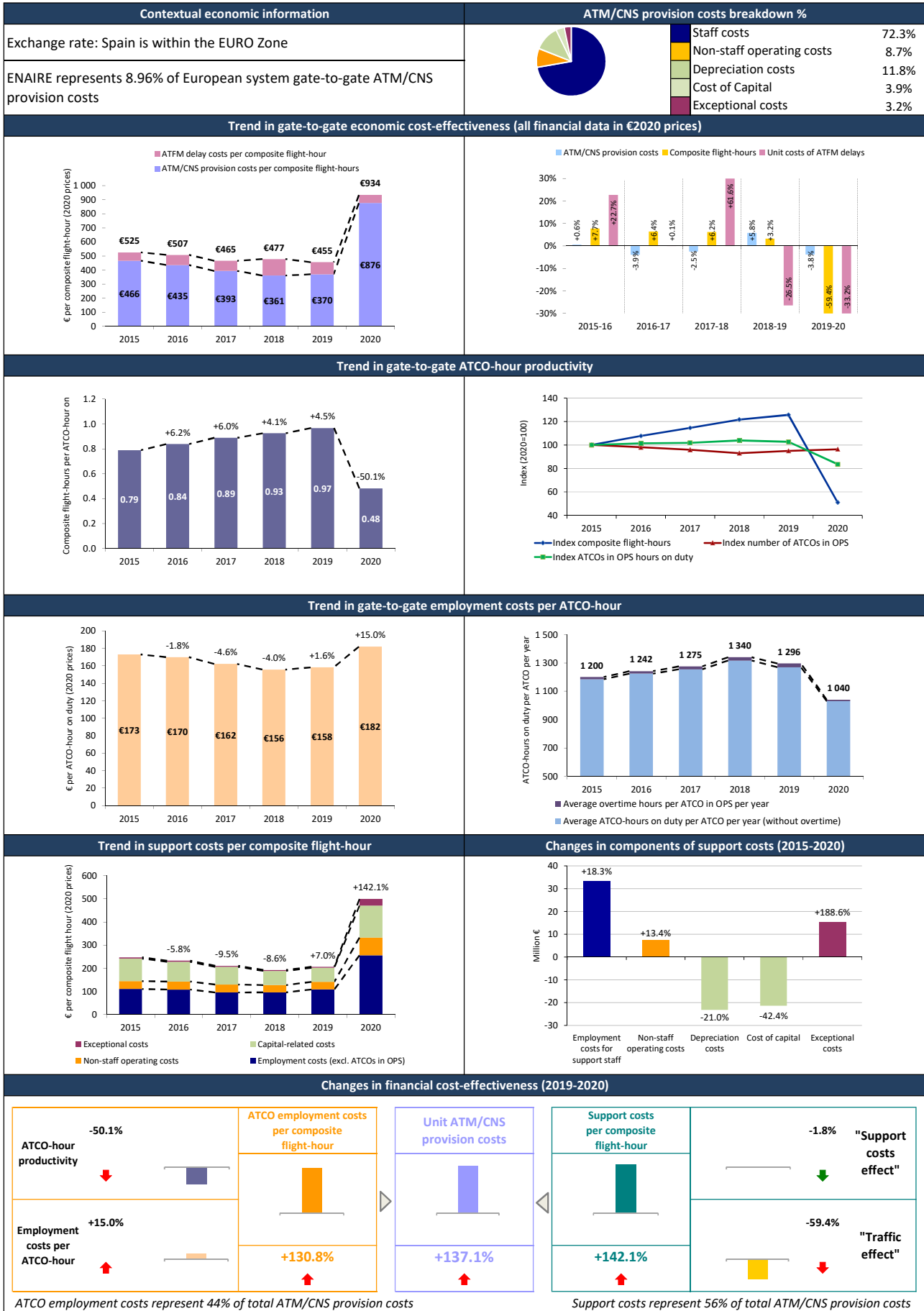
* if applicable

Size (2020)

Size of controlled airspace: 2 190 000 km²

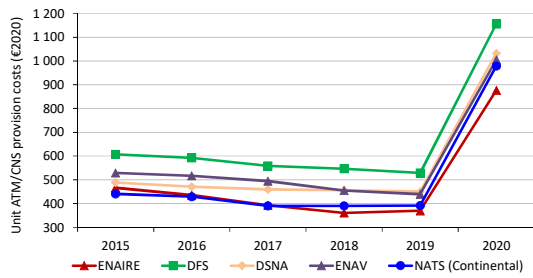


ENAIRES (Spain) – Cost-effectiveness KPIs (€2020)

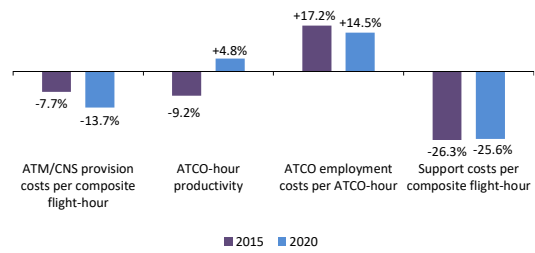


ENAIRE (Spain) – Cost-effectiveness KPIs (€2020)

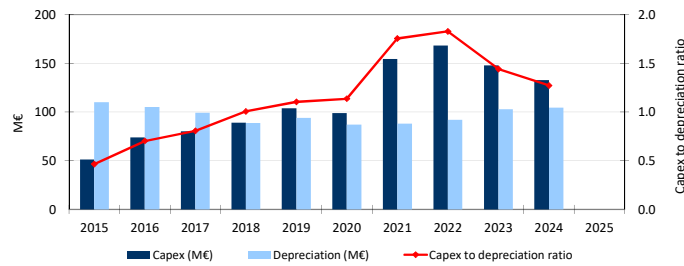
Changes in unit gate-to-gate ATM/CNS provision costs within comparator group



Deviation from groups' weighted average



Capital expenditures and depreciation costs



Information on major capex projects and ATM systems upgrades/replacements

ATM	COM	NAV	SUR	Buildings	Other	Years	FDPs	RDPS	HMI	VCS
							C: 2006 (all ACCs)*	C: 2006 (all ACCs)*	C: 2006 (all ACCs)*	C: 2014 Canarias ACC & 2000 (TMA), 2002 (En-route) for other ACCs
€72.4M			€18.5M		€303.4M**	2015				
						2016	Canarias	Canarias	Canarias	Canarias
						2017	Barcelona, Madrid, Palma, Sevilla	Barcelona, Madrid, Palma, Sevilla	Barcelona, Madrid, Palma, Sevilla	Canarias
						2018	Barcelona, Canarias, Madrid	Barcelona, Canarias, Madrid	All ACCs	Canarias
						2019				
€548.1M (2021-2028)					€97.9M (2021-2028)	2020	Barcelona, Canarias, Madrid	Barcelona, Canarias, Madrid	All ACCs	Madrid Canarias
						2021				Barcelona
						2022				
						2023			Palma, Sevilla	
						2024				Palma, Sevilla
						2025				

** This amount includes capex that are relating to several domains (e.g. ATM, CNS and Building)

* C = Commissioning

Upgrade

Replacement

Focus on the top five capex projects

Project number	Name of the project	Domain	Capex spent between start and end dates (€M)	Start date	End date
1	Digital Tech	ATM/COM/NAV	306.6	2021	2028
2	Digital Network	ATM/COM/NAV	104.0	2021	2028
3	ENAIRE's Digital Transformation	OTHER	65.2	2021	2028
4	Technical evolution towards ADSP	ATM/COM	60.4	2021	2028
5	Digital Airspace	ATM/COM/NAV	53.2	2021	2028